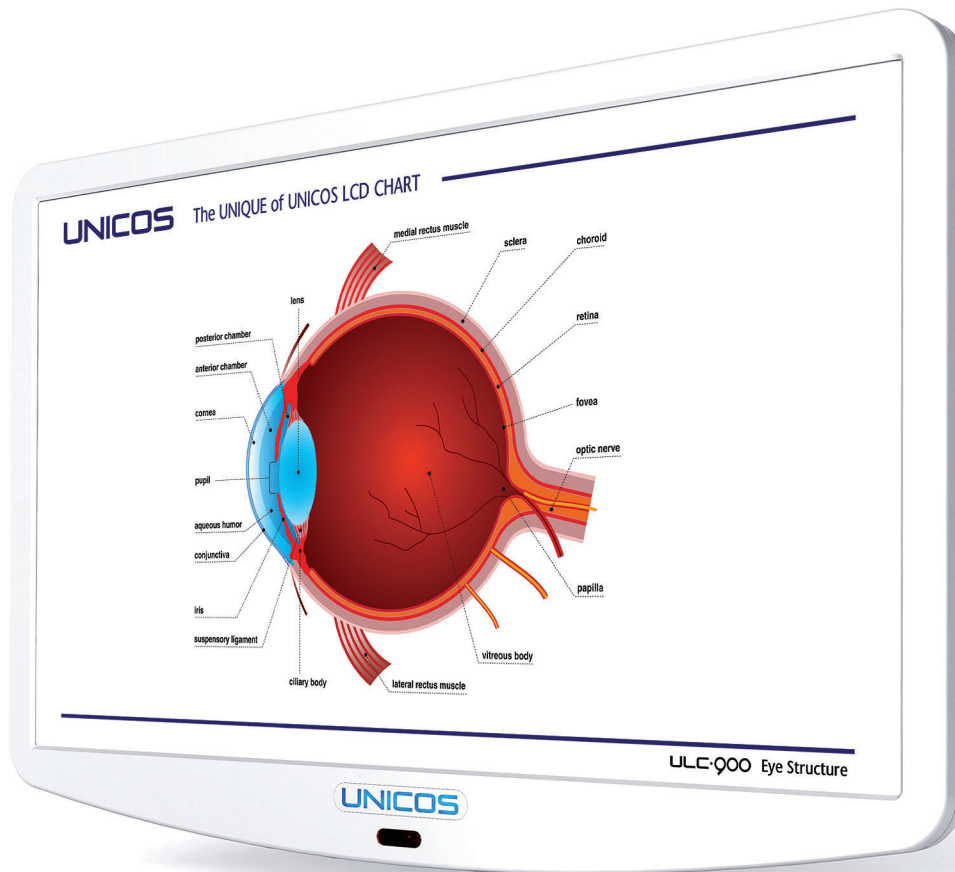




The UNIQUE of UNICOS LCD CHART

# ULC·900

CE



Brilliantly Conceived & Beautifully Crafted



# ULC-900 The UNIQUE of UNICOS LCD CHART

ULC-900 is a digital chart that provides charts for visual measurements and images for further explanation.

The user can use the remote control to display the desired charts and contents and with the program function, the optometrist can select and display charts when measuring.

It provides a variety of basic charts for ancillary tools such as vision measurement and binocular balance test, horizontal / vertical aniseikonia test, phoria test and color vision test.

## Features

**24 Inch FHD** Wide monitor provides a wide field of view & supports clear charts of high resolution for comfortable & reliable inspection.

The installation distance can be adjusted from **1.5M to 7.0M** according to optometry environment of the user and the mirror function can be installed and used even in a narrower space.

Using a high-performance polarizing filter, the polarizing charts can be inspected without being affected by the installation distance.

Contrast control function enables contrast sensitivity test and it is easy for eyesight test of cataract patients.



Using the function of black and white reversal, it is useful for eyesight test of patients who have LASIK surgery.



It could be used solely by using wireless remote control and can be used precisely and quickly when used in conjunction with UNICOS' Digital Refractor.

It can be always used with the latest program since the program could be easily upgraded with USB memory.

## Networking System

ULC-900 could be linkable with UNICOS' Digital refractor to be used more conveniently.

A remote control for prompt and convenient test.

## Color-blindness Test

Preset seven type's charts / Random selection function.



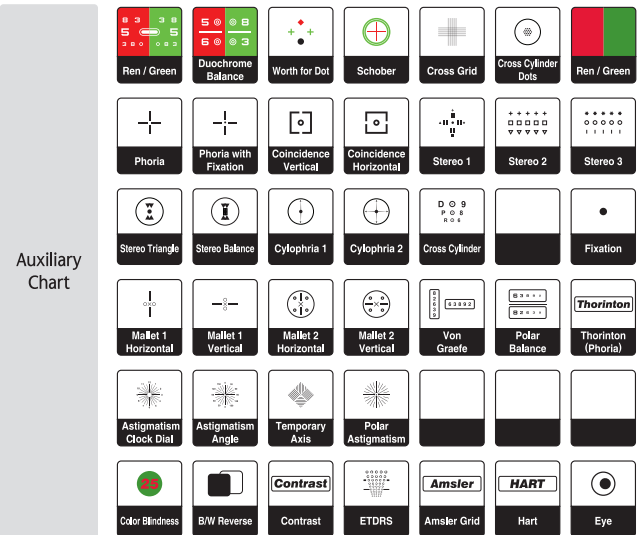
# UNICOS

UNICOS Co., Ltd.

282-30, Munji-ro, Yuseong-gu, Daejeon, Republic of Korea (ZIP CODE) 34050  
Tel +82-42-825-8045 Fax +82-42-581-0053

E-mail : marketing1@e-unicos.com

## Function Chart



## SPECIFICATIONS

LCD Type	24Inch TFT, LED Backlight
Resolution	1920 (H) X 1080 (V) Pixels
Display Area	531.36 (H) X 298.89 (V) mm
Dimension / Weight	575(W) X 370(H) X 43(D) mm, 4Kg
RC size / Weight	64(W) X 195(H) X 20(D) mm, 110g
Power Supply	DC 5V / 5A Adapter
Power Consumption	Max. 15W
Chart	Landolt Ring / Snellen Numbers / Letters / Korean Children
Masking	Single Character, Horizontal Line, Vertical Line Normal, Center
Filter	Red / Green Filter
Visual Functions	Red / Green, Polar separation, 3D polar, Strabismus 3D Red / Green, Color blindness
Distance	1.5M ~ 7.0M (Changes into 0.25meter unit)

### Accessories

Cradle - Wall (Standard) / Floor (Optional) / Table (Optional) /  
Special glasses - Polarizing glasses (Optional), Red/green glasses (Optional) /  
Remote Controller (Batteries), Adapter, Serial cable, Power cable, Cleaning cloth.

Design and details are subject to change without prior notice for its improvements.

Distributed by